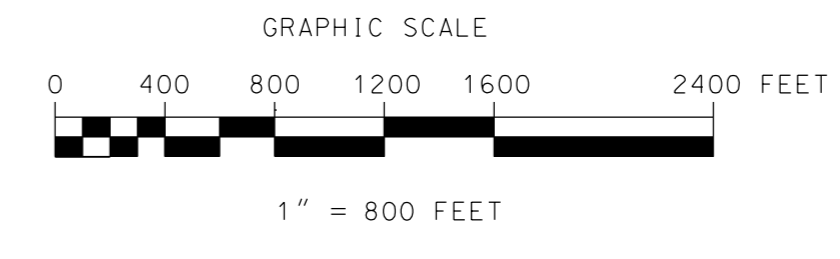
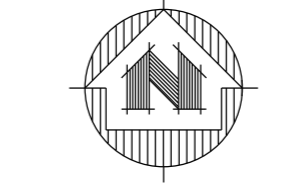
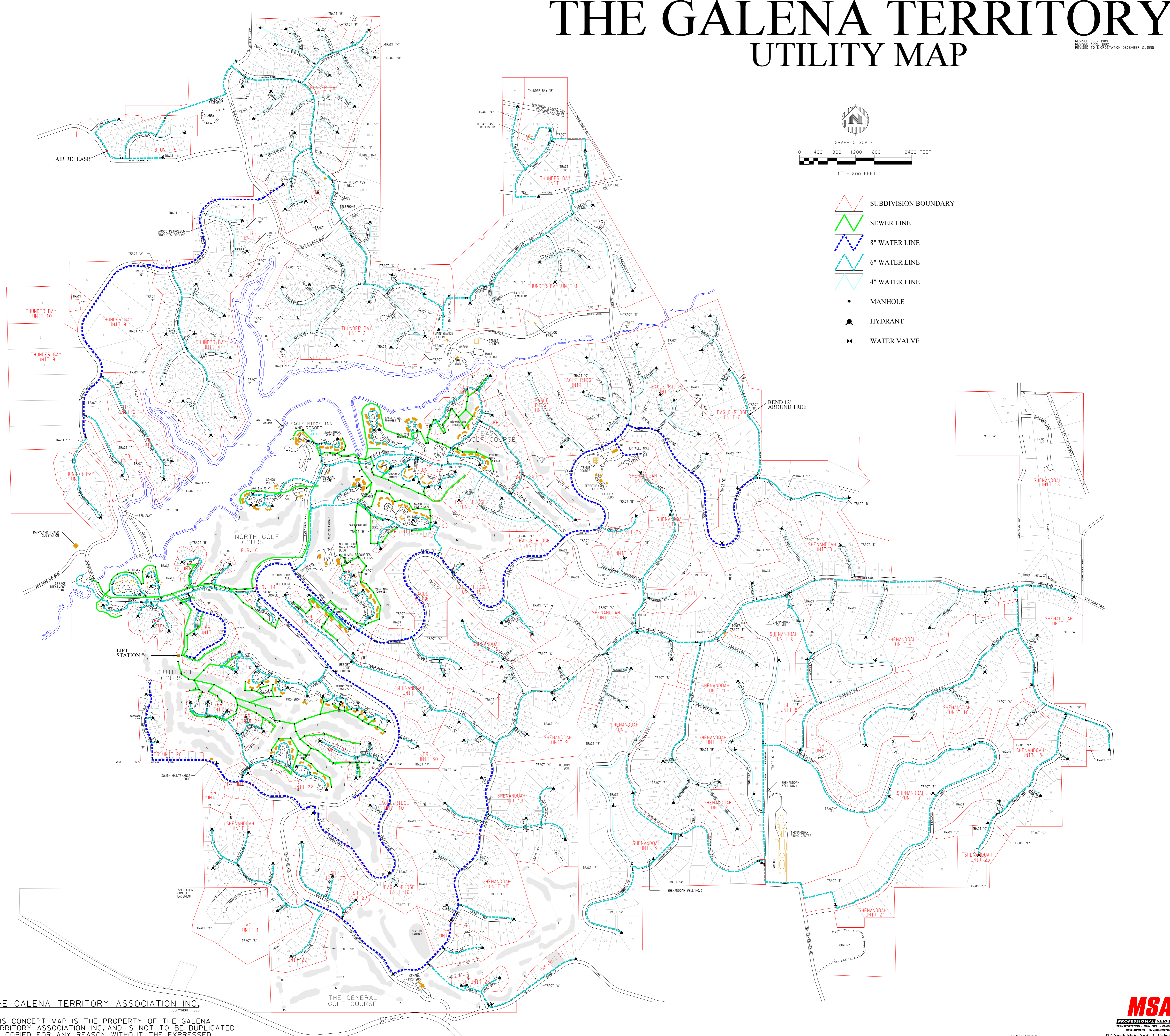


THE GALENA TERRITORY UTILITY MAP

REVISED JULY 1989
REVISED APRIL 1995
REVISED TO MONITORING DECEMBER 12, 1995



- SUBDIVISION BOUNDARY
- SEWER LINE
- 8" WATER LINE
- 6" WATER LINE
- 4" WATER LINE
- MANHOLE
- HYDRANT
- WATER VALVE

THE GALENA TERRITORY ASSOCIATION INC.
COPYRIGHT 1995

THIS CONCEPT MAP IS THE PROPERTY OF THE GALENA TERRITORY ASSOCIATION INC. AND IS NOT TO BE DUPLICATED OR COPIED FOR ANY REASON WITHOUT THE EXPRESSED WRITTEN CONSENT OF THE SAID CORPORATION.

MSA
PROFESSIONAL SERVICES

TRANSPORTATION - MUNICIPAL - LANDMARK DEVELOPMENT - ENVIRONMENTAL
322 North Main, Suite A Galena, IL 61036
815-777-9333 Fax: 815-777-3155

Drafted: MWW
Plot Date: 05/11/00
File: g:\projects\maps\ill\city\ugt\utility_map.dgn